

Iammina

7.5UL

Ultra Light Aluminum Tenders



S P E C S	Overall Length	: 7' 10" / 2.39m	Number of Chambers	: 2	Shaft Length	: 15" / 38.1cm
	Overall Beam	: 4' 11" / 1.50m	Person Capacity	: 3	RDC Design Category	: C
	Inside Length	: 5' 5" / 1.65m	Weight	: 66lb / 30kg		
	Inside Beam	: 2' 2" / 0.66m	Recommended HP	: 3hp / 2.2kw		
	Tube Diameter	: 16" / 0.40m	Maximum HP	: 4hp / 2.9kw		

S T A N D A R D F E A T U R E S	<ul style="list-style-type: none">Shallow "V" Marine Grade Aluminum HullNon-Skid Rubber Floor PanelsPlastic External Transom PlateAluminum Internal Transom Plate With Security LipAluminum Bow Eye3 Aluminum Davit Lifting PointsAluminum Bow Towing RingsDeck Drain with PlugOrca (CSM) Five Layer Coated Fabric	<ul style="list-style-type: none">Raised Single Rub RailPush Push Plastic Non-Corrosive 2 Stage Inflation Valves1 Front Orca (CSM) Fabric Handles on Tubes2 Inside Bow Single Orca (CSM) Fabric Handles on Tubes2 Inside Stern Single Orca (CSM) Fabric Handles on TubesRemovable Rowing SeatOarlock BasesTelescopic Oars with Aluminum Shaft	<ul style="list-style-type: none">Paddle HoldersHand PumpMaintenance KitOwner's Manual3 Layer Reinforced Seams

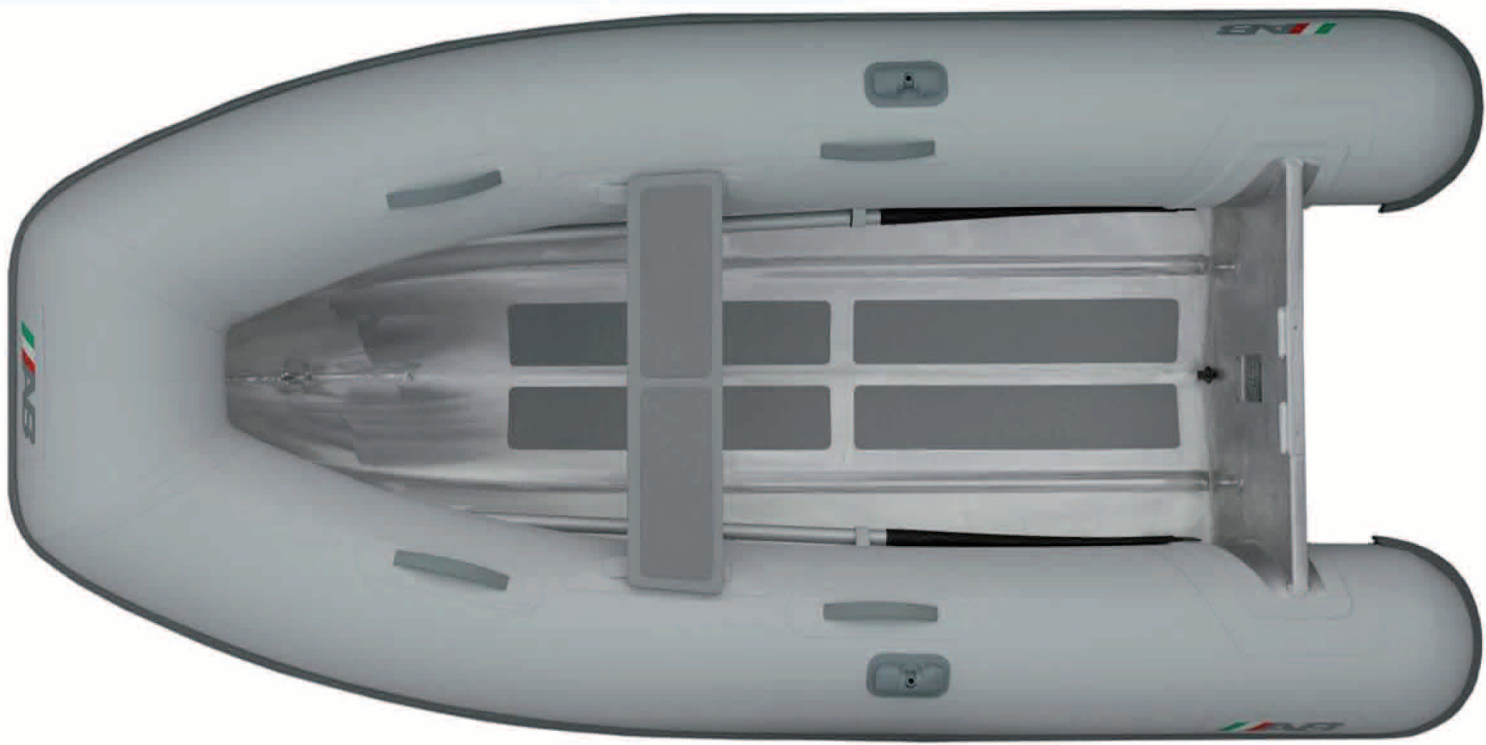
O P T I O N A L F E A T U R E S	<ul style="list-style-type: none">Tube ChapsBoat CoverChock Set	



lammina

8UL

Ultra Light Aluminum Tenders



S P E C S	Overall Length	: 8' 5" / 2.56m	Number of Chambers	: 2	Shaft Length	: 15" / 38.1cm
	Overall Beam	: 4' 11" / 1.50m	Person Capacity	: 4	RDC Design Category	: C
	Inside Length	: 5' 10" / 1.79m	Weight	: 68lb / 31kg		
	Inside Beam	: 2' 2" / 0.66m	Recommended HP	: 4hp / 3.0kw		
	Tube Diameter	: 16" / 0.40m	Maximum HP	: 5hp / 3.8kw		

S T A N D A R D F E A T U R E S	<ul style="list-style-type: none">Shallow "V" Marine Grade Aluminum HullNon-Skid Rubber Floor PanelsPlastic External Transom PlateAluminum Internal Transom Plate With Security LipAluminum Bow Eye3 Aluminum Davit Lifting PointsAluminum Bow Towing RingsDeck Drain with PlugOrca (CSM) Five Layer Coated Fabric	<ul style="list-style-type: none">Raised Single Rub RailPush Push Plastic Non-Corrosive 2 Stage Inflation Valves1 Front Orca (CSM) Fabric Handles on Tubes2 Inside Bow Single Orca (CSM) Fabric Handles on Tubes2 Inside Stern Single Orca (CSM) Fabric Handles on TubesRemovable Rowing SeatOarlock BasesTelescopic Oars with Aluminum Shaft	<ul style="list-style-type: none">Paddle HoldersHand PumpMaintenance KitOwner's Manual3 Layer Reinforced Seams

O P T I O N A L F E A T U R E S	<ul style="list-style-type: none">Tube ChapsBoat CoverChock Set	



Iammina

9UL

Ultra Light Aluminum Tenders



S P E C S	Overall Length	: 9'1" / 2.76m	Number of Chambers	: 2	Shaft Length	: 15" / 38.1cm
	Overall Beam	: 4'11" / 1.50m	Person Capacity	: 4	RDC Design Category	: C
	Inside Length	: 6'3" / 1.90m	Weight	: 75lb / 34kg		
	Inside Beam	: 2'3" / 0.70m	Recommended HP	: 6hp / 4.5kw		
	Tube Diameter	:	Maximum HP	: 8hp / 6.0kw		

S T A N D A R D F E A T U R E S	<ul style="list-style-type: none">Shallow "V" Marine Grade Aluminum HullNon-Skid Rubber Floor PanelsPlastic External Transom PlateAluminum Internal Transom Plate With Security LipAluminum Bow Eye3 Aluminum Davit Lifting PointsAluminum Bow Towing RingsDeck Drain with PlugOrca (CSM) Five Layer Coated Fabric	<ul style="list-style-type: none">Raised Single Rub RailPush Push Plastic Non-Corrosive 2 Stage Inflation Valves1 Front Orca (CSM) Fabric Handles on Tubes2 Inside Bow Single Orca (CSM) Fabric Handles on Tubes2 Inside Stern Single Orca (CSM) Fabric Handles on TubesRemovable Rowing SeatOarlock BasesTelescopic Oars with Aluminum Shaft	<ul style="list-style-type: none">Paddle HoldersHand PumpMaintenance KitOwner's Manual3 Layer Reinforced Seams

O P T I O N A L F E A T U R E S	<ul style="list-style-type: none">Tube ChapsBoat CoverChock Set	



Iammina

10UL

Ultra Light Aluminum Tenders



SPECS

Overall Length	: 10' / 3.05m	Number of Chambers	: 3	Shaft Length	: 15" / 38.1cm
Overall Beam	: 5'6" / 1.68m	Person Capacity	: 5	RDC Design Category	: C
Inside Length	: 7'2" / 2.18m	Weight	: 95lb / 43kg		
Inside Beam	: 2'8" / 0.81m	Recommended HP	: 8hp / 6.0kw		
Tube Diameter	: 17" / 0.43m	Maximum HP	: 9.9hp / 7.4kw		

STANDARD
FEATURES

- Shallow "V" Marine Grade Aluminum Hull
 - Transom Knee
 - Non-Skid Rubber Floor Panels
 - Plastic External Transom Plate
 - Aluminum Internal Transom Plate With Security Lip
 - Aluminum Bow Eye
 - 3 Aluminum Davit Lifting Points
 - Aluminum Bow Towing Rings
 - Deck Drain with Plug
- Orca (CSM) Five Layer Coated Fabric
 - Raised Single Rub Rail
 - Push Push Plastic Non-Corrosive 2 Stage Inflation Valves
 - 1 Front Orca (CSM) Fabric Handles on Tubes
 - 2 Inside Bow Sets of Double Orca (CSM) Fabric Handles on Tubes
 - 2 Inside Stern Double Orca (CSM) Fabric Handles on Tubes
 - Removable Rowing Seat
 - Oarlock Bases
- Telescopic Oars with Aluminum Shaft
 - Paddle Holders
 - Hand Pump
 - Maintenance Kit
 - Owner's Manual
 - 3 Layer Reinforced Seams

OPTIONAL
FEATURES

- Tube Chaps
- Boat Cover
- Chock Set

